

Xerox FreeFlow™ Digital Workflow Collection

XEROX®

Technology | Document Management | Consulting Services

FreeFlow
Accxes™

▶ Productivity enhanced. Improve the efficiency and profitability of your wide-format print operation.

FreeFlow is a portfolio of production workflow products that enable you to speed up turnaround times and deliver greater value.

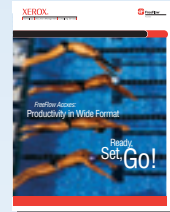
Specifications

FreeFlow Accxes™ supported file formats

HPGL/2, FileNET, Xerox Emulation 150, Versatec Data Standards, CalComp, TIFF 6.0, NIRS, CALS 1&2, RLE, CGM, VCGI. Optional: Adobe® PostScript® 3™, PDF.

Reference Data Summary

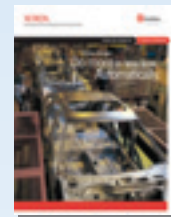
Platform:	Custom Dell™ PC, 2.5GHz Celeron® Processor, 512MB RAM, 80GB HDD
Operating System:	Linux
Protocols:	TCP/IP
Frame Types:	Ethernet II
Print Path:	LPD, Microsoft® Windows® port 9100, port 2000
Scan Path:	FTP
Print Job Submission:	Port 2000, HTTP
Topologies:	10/100/1000 BaseT network interface
Ports:	Serial RS232 (service only); USB 2.0 (folder interface only); IEEE 1394 (scanner only)
Printer Drivers:	Microsoft Windows: XP/2000/2003 server; AutoCAD 2002/2004/2005/2006, Adobe PostScript for Microsoft Windows XP/2000
Client Software:	FreeFlow Accxes Client Tools for Microsoft Windows: XP, 2000 and Solaris™ 2.6, 2.7, 2.8; FreeFlow Accxes Account Management Tool for Microsoft Windows: XP, 2000 and Solaris 2.6, 2.7, 2.8



FreeFlow Accxes®
Realize higher productivity and greater control of your wide-format printing, copying and scanning operations with this upgradeable controller and suite of easy-to-use tools.



FreeFlow Makeready
Simplify late-stage editing and complex document preparation.



FreeFlow Process Manager
Do more in less time by automating production steps, such as PDF normalization, preflighting, imposition, customer notification and more.



FreeFlow Print Manager
Program, submit and status digital printing jobs from anywhere in your existing workflow—even JDF-based, offset workflows.



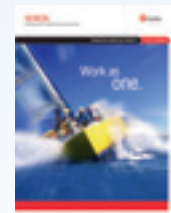
Monochrome and Highlight Color Production Printers



Wide Format Printers



Continuous Feed Printers



FreeFlow Output Manager
Improve digital print production capacity, turnaround and productivity by centralizing control of job management across multiple print production systems.



FreeFlow Variable Information Suite
Select from a powerful portfolio of tools enabling maximum production efficiency.



FreeFlow Web Services
Shorten the distance between you and your customers through online catalogs and job submission from anywhere.

For more information, call 1-800-ASK-XEROX ext. 874, or visit us online at www.xerox.com/FreeFlow.

PRODUCTION WORKFLOW PRODUCTS

Accxes

FreeFlow™ Accxes™
Productivity in Wide Format

Ready,
Set, Go!

Take command of your wide-format production

with FreeFlow™ Accxes™.



Once again, Xerox brings a whole new level of productivity to wide-format production. The Xerox FreeFlow Accxes controller offers major improvements in processing speed, while maintaining the same features and functionality as earlier releases.

Like its predecessors, the FreeFlow Accxes Controller includes a dedicated hardware server that runs the unique FreeFlow Accxes Controller firmware, including a set of printer drivers for use with graphics, business or engineering applications. In addition, every FreeFlow Accxes Controller comes with a suite of supporting client tools for PCs or Sun™ Solaris™ workstations.

Keep your system up-to-date

Instead of buying new hardware every time you want new performance, the FreeFlow Accxes Controller lets you simply upgrade by downloading new features, often at no cost. This makes the FreeFlow Accxes Controller a great value. Plus, there's no need to schedule a service call for upgrades and enhancements, except in rare cases, such as adding a scanner.

No need to learn a new workflow

With FreeFlow Accxes, you won't be working at the operating system level. The operating system is completely hidden, so there's no graphical or command line interface to deal with. Everything can be done using the Web Print Management Tool, Accxes Client Tools, or the copier user interface. And because we use a Linux operating system, FreeFlow Accxes provides a greater level of security.

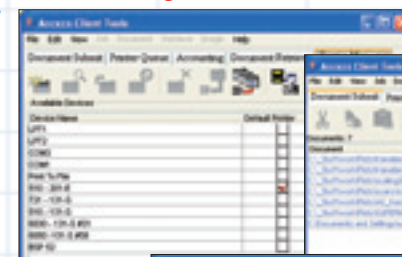
The FreeFlow Accxes Controller powers the fleet.

Send your jobs from a variety of network environments.

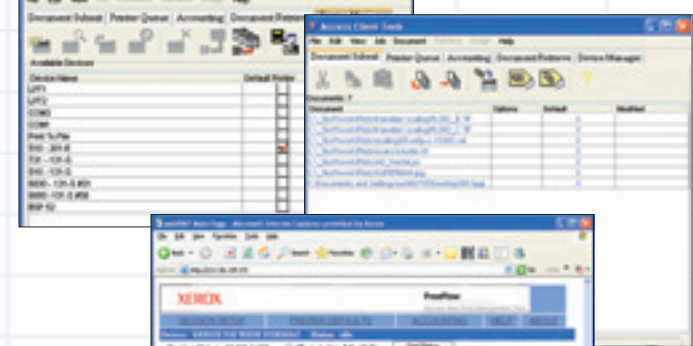
The FreeFlow Accxes Controller



Device Manager



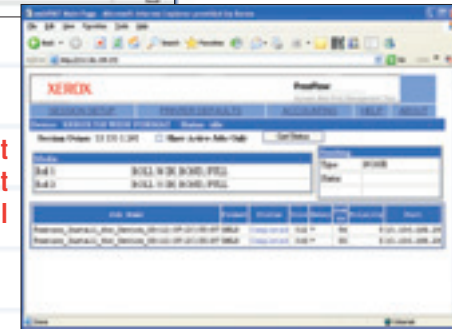
Document Submit



Print drivers. The print drivers convert Microsoft® Windows® display data into formats the FreeFlow Accxes controller can interpret and use to ensure a printer's output matches the application display. The drivers also embed PJI code in files containing specific printer or product information. Drivers include GDI, HDI, and PostScript.

Web Print Management Tool. This tool simplifies the work of system administrators. From any networked computer that has a browser, the administrator can maintain overall control of any FreeFlow Accxes solution.

Web Print Management Tool



Wide-format printing at its best

The FreeFlow Accxes controller configures to a broad range of Xerox wide format printers and scanners:

- Xerox 510
- Xerox 6050™/6030™
- Xerox 721
- Xerox 8825, 8830, 8850
- Xerox Scan System

Every FreeFlow Accxes Controller comes with these four Accxes Client Tools:

Document Submit Tool (DST)

Creates and prints jobs containing one or more print files. Allows you to specify options, including plot labels and raster stamps. Can view with third-party viewer.

Document Retrieve Tool (DRT)

Retrieves and stores images locally or on the network from controllers supporting the full Scan-to-Net option.

Device Manager

Allows you to tailor your desktop with connections to just the printers and/or scanners you use. Also lets you specify a default device to be used with DST, DRT and Printer Queue operations.

Printer Queue

Makes it easy to check the selected printer queue from a workstation. Lets you view each job in the queue and display media and status information.

Account Management Tool (AMT)

When used with the Account Data Tracking option, the Account Management Tool continuously tracks and maintains a job log file with scan, print and copy job information, media usage, time, and finishing data. Tracks up to 9,999 accounts, 9,999 users, and 999 printers in any combination.

Gain from a tradition of productivity advances—today and well into the future.

Unparalleled concurrency. You'll get more work done per unit of time than with any other controller in this class. One reason is that FreeFlow Accxes fully overlaps copying, printing, and scan-to-file jobs.

Superior rendering. Customized imaging algorithms optimize the performance and image output quality of every printer it supports, as well as the Wide Format Scan System.

High security. FreeFlow Accxes has a built-in firewall to inhibit electronic invasion and protect it against worms and viruses. In addition, an optional three-pass image overwrite feature ensures information is erased from the hard drive.

Excellent fidelity. Xerox uses both independent test suites and its own extensive testing to ensure FreeFlow Accxes interprets each format with high integrity. It also supports most engineering and graphic formats, both vector and raster.

Easy-to-use client software. It's hard to overestimate how much the Accxes Client Tools boost productivity. For example, the Document Submit Tool makes it easy to print complex, collated sets that used to require manual assembly and copying.

Flexible printer drivers. Users can print directly from a broad range of business and engineering applications.

Intuitive production or walk-up copying. You'll have a consistent interface for copying that's rich enough for complex production, yet easy enough for casual copying. And users won't have to push any buttons to make a simple copy.